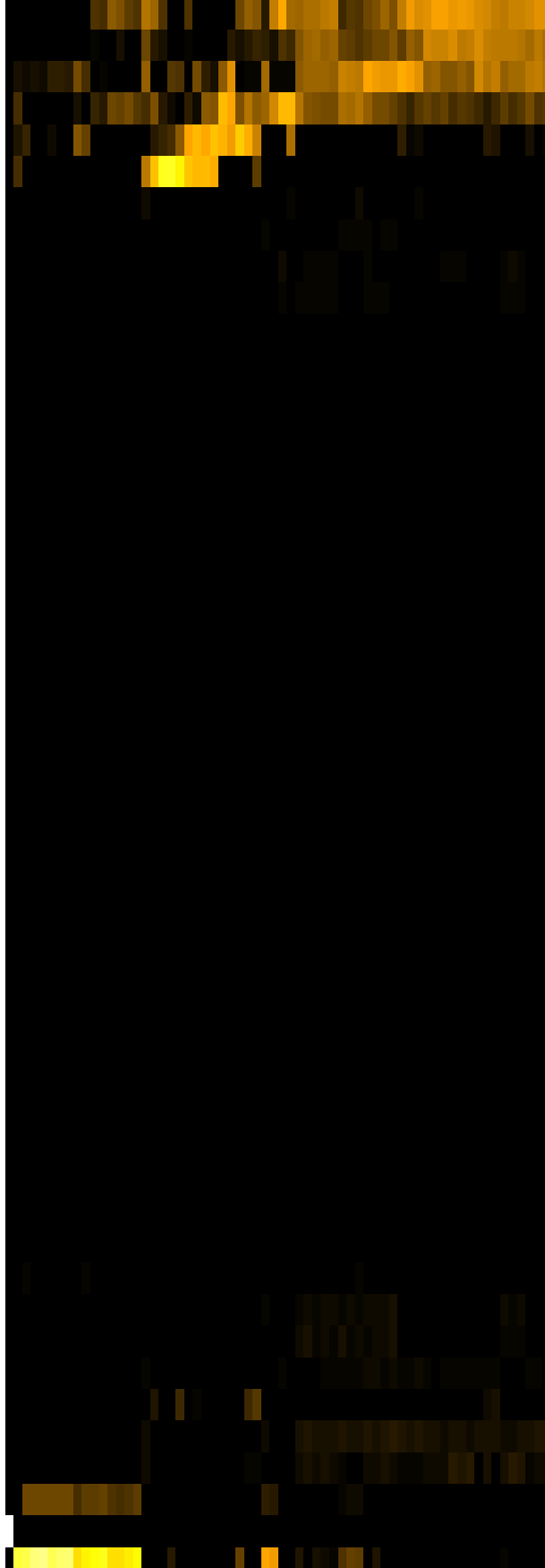
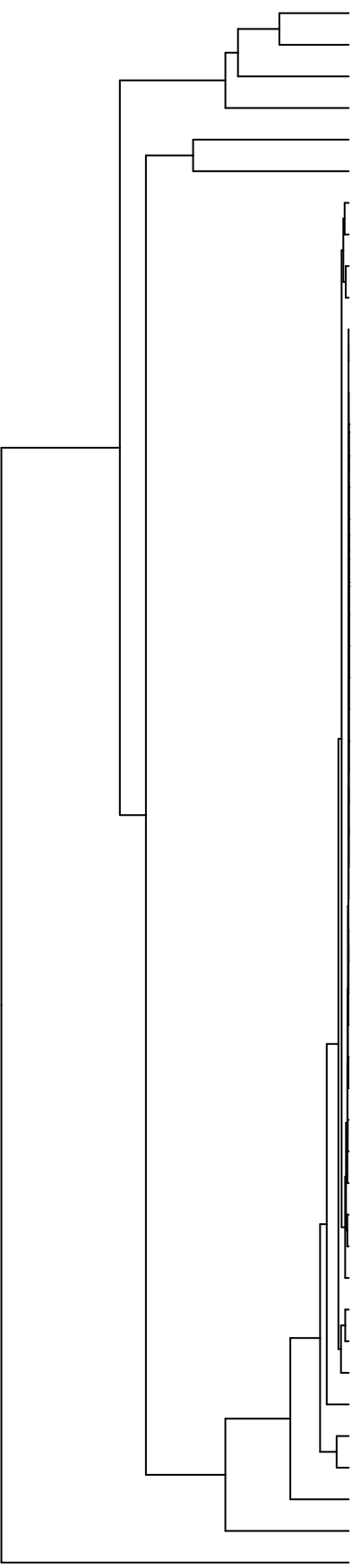


Group006
 D Final -PMA
 B Final -PMA



Veillonella
 Haemophilus
 Streptococcus
 Neisseria
 Klebsiella
 Enterobacter
 Rothia
 Gemella
 Campylobacter
 Porphyromonas
 Saccharibacteria_(TM7)_[G-1]
 Lautropia
 Riemeella
 Phyllobacterium
 Mycolicibacterium
 Agrobacterium
 Lachnospiraceae_[G-2]
 Acidovorax
 Novosphingobium
 Leifsonia
 Sphingobium
 Microbacterium
 Siccationidurans
 Delftia
 Capnocytophaga
 Acinetobacter
 Cutibacterium
 Absconditabacteria_(SR1)_[G-1]
 Saccharibacteria_(TM7)_[G-6]
 Catonella
 Oribacterium
 Lachnoanaerobaculum
 Stomatobaculum
 Solobacterium
 Lancefieldella
 Actinomyces
 Alloprevotella
 Serratia
 Leptotrichia
 Prevotella
 Staphylococcus
 Eikenella
 Aggregatibacter
 Schaalia
 Raoultella
 Granulicatella
 Fusobacterium
 Salmonella
 Pseudomonas
 Citrobacter

F28914.S583
 F28914.S405
 F28914.S401
 F28914.S404
 F28914.S408
 F28914.S417
 F28914.S422
 F28914.S420
 F28914.S243
 F28914.S579
 F28914.S561
 F28914.S562
 F28914.S563
 F28914.S567
 F28914.S584
 F28914.S081
 F28914.S423
 F28914.S097
 F28914.S101
 F28914.S099
 F28914.S085
 F28914.S087
 F28914.S086
 F28914.S247
 F28914.S246
 F28914.S261
 F28914.S258
 F28914.S259
 F28914.S244
 F28914.S102
 F28914.S103
 F28914.S264

Genus

Samples